

Dear Valued Customer.

## Catalog error correction notice

Thank you very much for your continued support.

There was an error in some of the descriptions in our "Gearmotor/Reducer General Catalog". We sincerely apologize and would like to inform you of the corrections below.

We apologize for the inconvenience, but please check the following information before using the service.

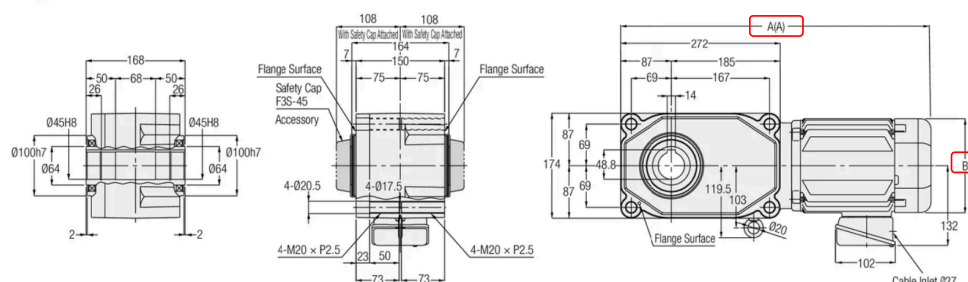
Please note that the digital catalog on our website contains the latest information with corrected typos, so we hope that you will also make use of the digital catalog.

### ■ Gearmotor/Reducer General Catalog



Induction gear motor F3S type (concentric right angle hollow bore) Shaft diameter 45 Flange mounting Page 420

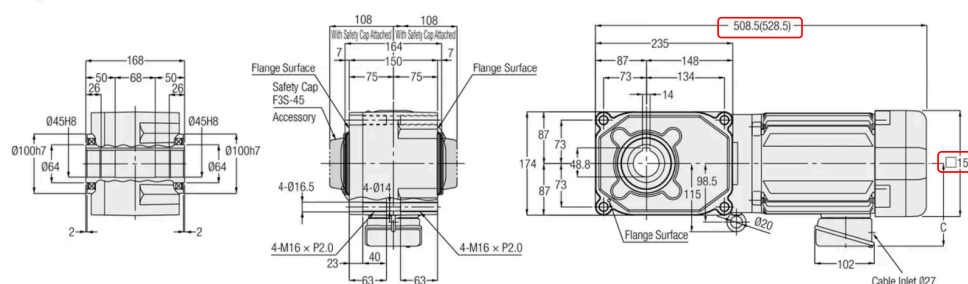
<Figure 1>



Incorrect: A (A)  
Correct: 508.5 (528.5)

Incorrect: B  
Correct: □156

<Figure 2>



Incorrect: 508.5 (528.5)  
Correct: A (A)

Incorrect: □156  
Correct: B

Number of Phases	Power	Part Number	Reduction Ratio	Figure Number	Brake	Approx. Weight (kg)	A	B	C
3-Phase	0.75 kW	F3S45N***-MD08T◇◇TN	80, 100, 120, 160, 200, 240	1	No	28.5	-	-	-
		F3S45N***-MD08T◇◇TB◆			Yes	30.5	-	-	-
	1.5 kW	F3S45N***-MD15T◇◇TN	5, 7.5, 10, 12.5, 15, 20, 25, 30, 40, 50, 60	2	No	35.5	536.5	□178	139
		F3S45N***-MD15T◇◇TB◆			Yes	38.5	565.5	□178	139
	2.2 kW	F3S45N***-MD22T◇◇TN	5, 7.5, 10, 12.5, 15, 20, 25, 30	2	No	42	570	□192	149
		F3S45N***-MD22T◇◇TB◆			Yes	45	599	□192	149

Note: A reduction ratio will be indicated as \*\*\* in the nomenclature. In addition, a supply voltage/certification code will be indicated as ◇◇, and brake specification will be indicated as ◆.

Note: When the reduction ratio is 7.5, "7" will be indicated as \*\*\* in the nomenclature, and when the reduction ratio is 12.5, "12" will be indicated as \*\*\* in the nomenclature.

### ■ Contacts (TEL)

NISSEI CORPORATION

●Oversea Sales Office : 0566-92-5312